

# Moon Shot for Equity Monthly Newsletter

## September 2021



### Best Practice Team Fall Updates

#### Prioritization Lists

This Fall, teams are engaging in focus groups and a Navigate climate survey to understand Navigate need and prioritize next steps accordingly.

- **Hold Reform teams** are finalizing hold audits and using data to understand holds disproportionately affect certain students. Teams are creating policy recommendations based on findings.
- **Holistic Care teams** are focusing on 1-3 high impact campaigns to engage students in support while building out coordinated care networks.
- **Transfer Pathway teams** are holding student focus groups, website audits and will begin forming faculty learning communities to align academic pathways across institutions.
- **Retention Grants teams** are engaging in HEERF strategy and will monitor effectiveness of grant distribution processes.

### Equity Mindedness eConvening Series

As part of the Moon Shot for Equity partnership, Milwaukee Moon Shot institutions are engaged in a monthly racial equity eConvening Series. Each Institution will appoint stakeholder(s) to attend live sessions. This series is hosted by USC Race and Equity Center, for more information on the center, click [here](#).

#### September's Equity Series Training

#### Integrating Racial Topics Across the Curriculum

Friday, September 17<sup>th</sup> 1-4pm CST

Registration links will be sent out to select stakeholders in advance of the session.

### Access Equity Infographic Resources

**Taking Action on Student Equity**  
21 Strategies to Advance Underserved and Nontraditional Student Success

**Support Equity in Student Success with Navigate**  
How to Leverage the Platform to Support Your Equity Strategy

# Moon Shot for Equity Monthly Newsletter

## September 2021

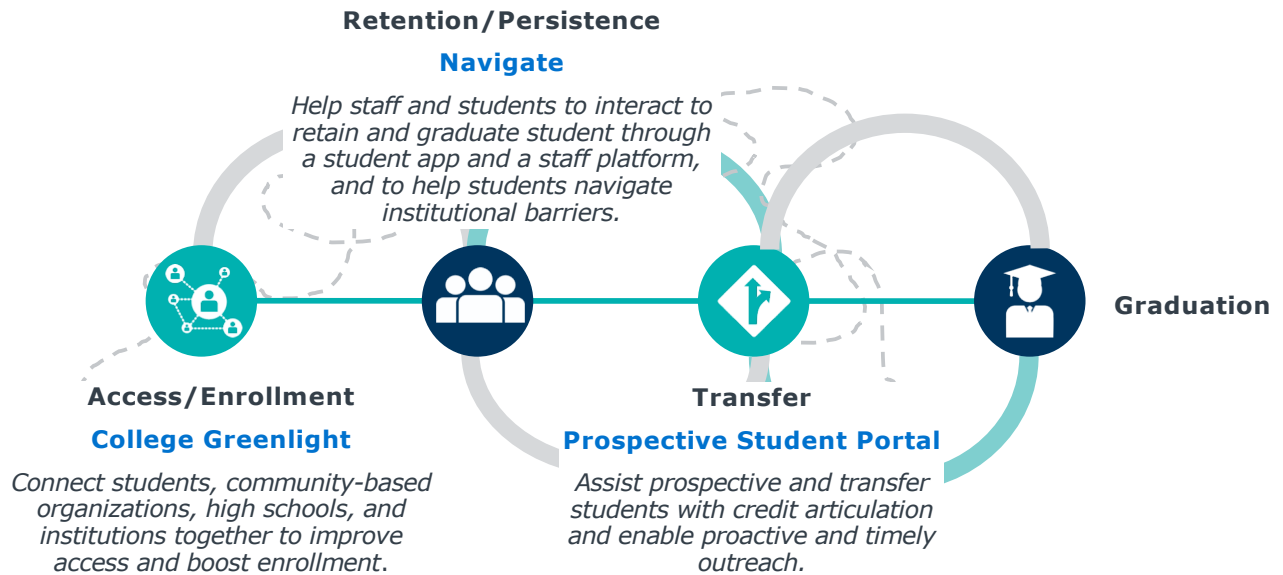


### Moon Shot for Equity Technologies

*The Advantage of a Common Tech Infrastructure*

- Eliminate needless student swirl between and within institutions
- Common technology experience for students as they flow amongst institutions
- Common data analytics capabilities to enable information and best practice sharing
- Shared implementation and utilization fosters collaboration for professional development

### Ensure All Paths Lead to Success



### Technology Implementation Timeline

	Status	Timeline
<b>Navigate: Staff Facing</b>	LIVE	COMPLETE Spring 2021
<b>Navigate: Student App</b>	LIVE	COMPLETE Spring/Summer 2021
<b>Navigate: Academic Planner</b>	IN PROCESS, <i>exception MATC</i>	UWM Piloting in Spring 2021/22 UWP COMPLETE Fall 21 All COMPLETE Fall 2022
<b>Prospective Student Portal</b>	UNDER REVIEW; <i>exception Carthage</i>	TBD
<b>College Greenlight</b>	Launch calls held July-August	Implementing Fall 2021 COMPLETE Spring 2022



# Stay Connected!

## Logging in to EAB.com

Create an account to register for live and on-demand virtual engagement opportunities, best practice student success research and the latest from EAB!

### Step 1

Go to our website, [www.eab.com](http://www.eab.com).

### Step 2

On the top right of the homepage, click the "Log In" button, then select "Create an Account".

### Step 3

On the registration page, you will be prompted to enter your institutional email (e.g., your .edu email address), your institution's country, city, state, and zip code. Once you've input this information, select your institution from the organization drop down list and click on the button that says "Go to Step 2".

NOTE: If your institution does not appear in the drop-down list, send an email to [eabhelp@eab.com](mailto:eabhelp@eab.com) for assistance.

### Step 4

Check your .edu email inbox (including junk and/or spam folders) for an email from EAB.com to verify your email address and create a password for your account. If you haven't received an email after several minutes, email [eabhelp@eab.com](mailto:eabhelp@eab.com) for assistance.

### Step 5

Add [Events@eab.com](mailto:Events@eab.com) to your contacts (or ask your IT department) to make sure you receive all event registration confirmations and calendar holds.

The image shows two screenshots of the EAB.com website. The top screenshot is the login page, featuring a navigation bar with 'Careers', 'Contact Us', and 'Login'. Below the navigation is a login form with 'Email' and 'Password' input fields, a 'Lost Password?' link, a 'Remember me' checkbox, and an orange 'LOGIN' button. Below the login form are links for 'Create an account' and 'Learn more about partnership'. The bottom screenshot is the registration page, titled 'Register', with a 'Step 1' heading. It contains several form fields: 'Email' (with a red asterisk), 'Country' (a dropdown menu), 'State/Province' (a dropdown menu), 'City', 'Zip Code', and 'Your Organization' (a dropdown menu). A note at the bottom states: 'If your organization does not appear in this list, please contact the EAB Help at [eabhelp@eab.com](mailto:eabhelp@eab.com).' A 'GO TO STEP 2' button is located at the bottom right of the registration form.



For More Information about Moon Shot for Equity click [here](#).

## Contact Your Respective Program Owner to Learn More

**DeAnn Possehl**  
UW-Parkside

[Possehl@uwp.edu](mailto:Possehl@uwp.edu)

**Phyllis King**  
UW-Milwaukee

[pking@uwm.edu](mailto:pking@uwm.edu)

**Vicki Turner**  
UW-Milwaukee

[turner@uwm.edu](mailto:turner@uwm.edu)

**Christine Manion**  
MATC

[manionc@matc.edu](mailto:manionc@matc.edu)

**Abby Hanna**  
Carthage College

[ahanna@carthage.edu](mailto:ahanna@carthage.edu)

